

COMPANY  
BROCHURE  
2025



**TRIPLE-P**  
ENGINEERING SOLUTION

شركة تربل بي للحلول الهندسية

# Welcome

# 01

## Message From CEO.



As we start a new year, I am thrilled to welcome you to the 2025 profile of Triple P Engineering Solutions LLC.

Our company were Founded by a dedicated team of expert engineers with commitment to deliver innovative solutions tailored to our clients' needs.

As we look ahead to 2025, we remain true to our core values of integrity, safety, and quality.

We will continue to use advanced technologies and innovative practices to enhance our services.

Our goal in 2025, is not only to meet our clients' evolving needs but also to make a positive impact on the industries we serve. Together, we will tackle the challenges ahead and embrace the opportunities of the future.

**M. MONIEM**  
CEO. & Co-founder

# Index.

<b>Welcome</b> Triple-P Engineering CEO Message.	01
<b>Introduction Our Company</b> Triple-P Engineering History, Mission, Vision & Values	02
<b>QHSE Compliance</b> Quality, Health, Safety & Environment.	03
<b>Market &amp; Business</b> Triple-P Engineering core market & services	04
<b>Capabilities</b> our diverse capabilities that empower us to deliver exceptional solutions tailored to meet client needs.	05
<b>Clients &amp; Partners</b> our esteemed clients and partners who drive our success through collaborative efforts.	06
<b>Projects Highlights</b> our key project highlights across diverse initiatives.	07
<b>Projects History</b> Our projects journey since 2012.	08

# Introduction

## Our Company

**We offer a wide range of Solutions & Services to a broad spectrum of industries.**

**2012** Our company emerged as a provider of engineering services, across a wide range of industries. With a primary focus on oil and gas (both onshore and offshore), petrochemicals, and industrial projects.

**2014** We expanded our scope and began offering comprehensive services encompassing engineering, procurement, construction, and project management EPC (Turnkey projects) / EPCM.

**2022** Triple-P Engineering Solutions LLC expanded its operations to the Gulf region by establishing new branches in kingdom of Saudi Arabia KSA & United Arab Emirates UAE. These branches allow us to extend our expertise and services to a broader market and cater to the growing demand in the region.

# 02



### MISSION

- Our mission is to deliver outstanding EPC and EPCM services that not only meet but exceed our clients expectations. By employing optimized engineering methodologies



### VISION

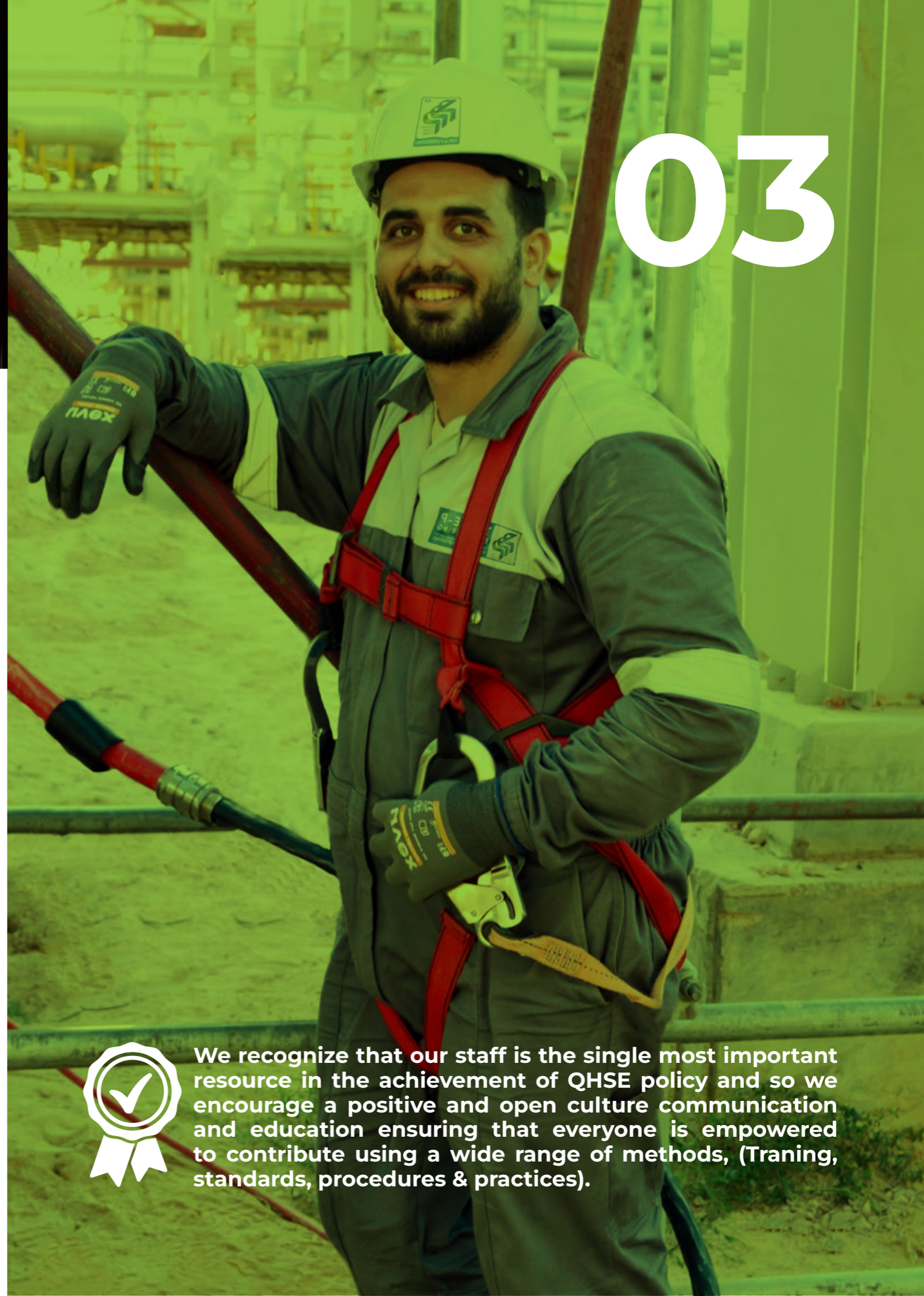
- We aspire to achieve a leading market position by delivering world-class EPC and EPCM services.
- Our commitment to upholding the highest quality, health, safety, and environmental standards serves as the foundation for our progressive growth.



### VALUES

- We are here for our clients.
- We value our employees.
- There is always room for improvement.
- We make sensible use of our resources.
- Honesty is the best policy.

**“ We specialize in delivering turnkey projects, handling all aspects of Engineering, Procurement and Construction across various industries both Greenfield & brown field.**



03

# Quality, Health, Safety & Environment

## **Q** Quality Management System.

We aim to satisfy our clients requirements, totally and consistently. To achieve this we adopted a policy to establish, maintain and develop an effective and efficient Quality Management System certified to ISO-9001/2008.

### H S E

#### **We are committed to:**

##### **Minimizing Environmental Impact:**

We strive to reduce our environmental footprint through pollution prevention, the reduction of natural resource consumption, emissions & waste recycling.

##### **Applying Technical Skills:**

We integrate our technical expertise into all aspects of health, safety, and environmental (HSE) considerations in the design and construction of our projects.

##### **Open Communication:**

We prioritize transparent communication to ensure a clear understanding of our Quality, Health, Safety, and Environmental (QHSE) policies, standards, programs & performance.

##### **Continuous Improvement:**

We are committed to enhancing our performance on QHSE issues and ensuring compliance with specified customer requirements.

##### **Setting Objectives:**

We establish quality and HSE performance objectives, measure results, and continually assess and improve our processes and services through an effective management system.

##### **Emergency Preparedness:**

We plan for, respond to & recover from emergencies, crises & business disruptions to ensure the safety and security of our people at all times.



**We recognize that our staff is the single most important resource in the achievement of QHSE policy and so we encourage a positive and open culture communication and education ensuring that everyone is empowered to contribute using a wide range of methods, (Traning, standards, procedures & practices).**



# Market & Business

In today's complex and fast-changing business world, EPC and EPCM contractors are very important. They help manage resources, schedules & costs. Making them key partners in ensuring that projects succeed in many different industries.

EPC Engineering, Procurement & Construction (Turnkey projects / design & build)	VS	EPCM Engineering, Procurement & Construction Management
Full responsibility by contractor		Management role client retains ultimate responsibility
Contractor assumes all risks		Client retains most risks contractor manages processes
Fixed price contract		Flexible pricing costs managed by client
Limited client control		Greater client control
Large-scale projects requiring expertise		Projects needing flexibility and client involvement

Our expertise allows us to handle every aspect of project, ensuring efficient and effective results tailored to meet the unique needs of each client and their specific requirements. At Triple-P we focus on delivering end to end solutions for projects in different industries, including both Greenfield and brownfield developments:

- Upstream oil & gas (onshore / offshore).
- Petrochemicals.
- Chemical.
- Green & renewable energy.
- Industrial.

Our ability to turn ideas into realities sets us apart. With our diverse range of services that includes:

- Basic Engineering (FEED).
- Detailed engineering (Design, 3D Model & Analysis).
- Consulting.
- Procurement services.
- Construction (Small & Medium Project).
- Project & Construction Management (Large Projects).

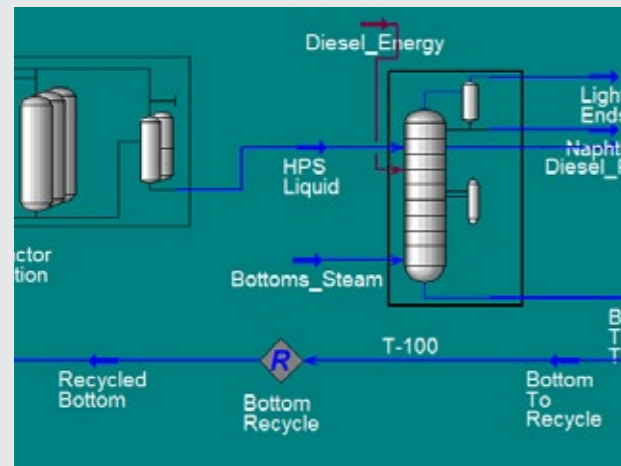
# 04

# Capabilities

# 05

Our capability to offer a seamless integration of project management, engineering, procurement, and construction expertise, ensuring efficient coordination, effective communication, and streamlined project execution.

## Engineering,



### Process Engineering.

- Process Simulation studies.
- Steady state flow assurance.
- PFD / P&ID development.
- Line Designation List (LDT).
- Heat & Material Balance.
- Tie-In Schedules.
- Cause & Effect diagrams.
- Operation, isolation & control philosophies.
- Start-up/down, relief, blow down.
- Flare systems.

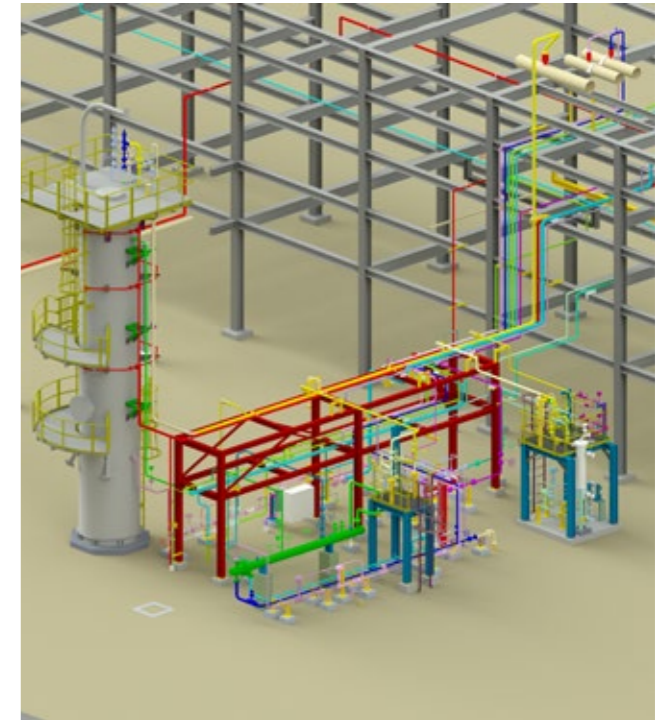


### Mechanical & Material.

- Packaged equipment.
- Static equipment design (pressure vessels & Tanks).
- Rotating equipment (selection).
- Vendor selection, requisitions, technical bid evaluations.
- Materials selection reports.
- Painting, Coating, Insulation and Cathodic protection.
- Valve and piping specification.

### Piping / Pipeline & Layout.

- Plant 3D modeling & layout.
- Development of Plot Plans and Equipment layouts.
- Clash detection & resolution.
- Layout optimization.
- Piping material Specification.
- Pipe stress analysis CAESAR II (Static & Dynamic).
- Piping supports design.
- Isometrics and Bill of Materials (BOM-MTO-BOQ).
- Piping General Arrangements (GA).
- Onshore pipeline calculations & alignment sheets.



### Structural & Civil.

- Structural optimization.
- Offshore topside Design.
- Weight Control & Optimization.
- Onshore plant structures.
- Pipe racks and Pipe ways/ sleepers.
- Foundation design.
- Brown-field modifications.



### Technical Safety & Loss prevention.

- Fire and Gas layouts.
- Hazard area drawings & schedules.
- QRA.
- SIL assessment and classification.
- Consequence analysis.
- Blast & explosion analysis.
- HAZID & HAZOP chairing.

## Electrical & Instrument.

- Power generation systems - gas turbine and Diesel generators.
- Power system analysis and studies MV and LV.
- Single line diagram
- Power factor improvement.
- Voltage drop
- Protection relay co-ordination
- Earthing / lightning systems
- Motor sizing, selection, power consumption and starting calculations.
- Emergency power systems design
- Hazardous area equipment selection and specification.
- Control & Instrumentation system specification.
- PLC , SCADA and BMS design
- Wiring digram, I/O lists
- Low current systems design ( PABX, IP systems, CCTV
- Cable sizing and Raceways design Load flow
- Short circuit
- Panels selection / specifications
- Lighting design in-door/out-door



## Offshore Structure & Sub-sea

- Assessment and push over analysis
- Topside weight control analysis, and modifications
- Pile capacity re-evaluation
- Spud can checks
- Sub sea installation and foundation systems
- Sub sea pipe lines stress analysis
- Foundation of vibrating equipment's
- On shore pipe racks and steel structures
- Blast proof building analysis
- Offshore Hull Tanks and Sloshing analysis
- Fixed offshore analysis ( In-place, Dynamics, Fatigue, Installation)
- Floaters, Hulls, and Jack-Up rigs





## Procurement,



### Piping / Pipeline

- Seamless and Welded Carbon Products , St.St ,Special Alloys.
- Size range: ½” nominal through 60” OD Wall Thickness up through 4” thick & heavier
- Specifications & Grades:
  - A-106 Grade B/C
  - SA-106 Grade B/C
  - A-333, Grade 1/6
  - API 5L & X-Grades through X-80
  - A-53 Grade B
  - SA-53 Grade B
  - A-519
  - A-513 Type 5 (DOM)
  - Rolled and Welded A-671 & A672
  - Equivalent standards

### Process & FF Pumps

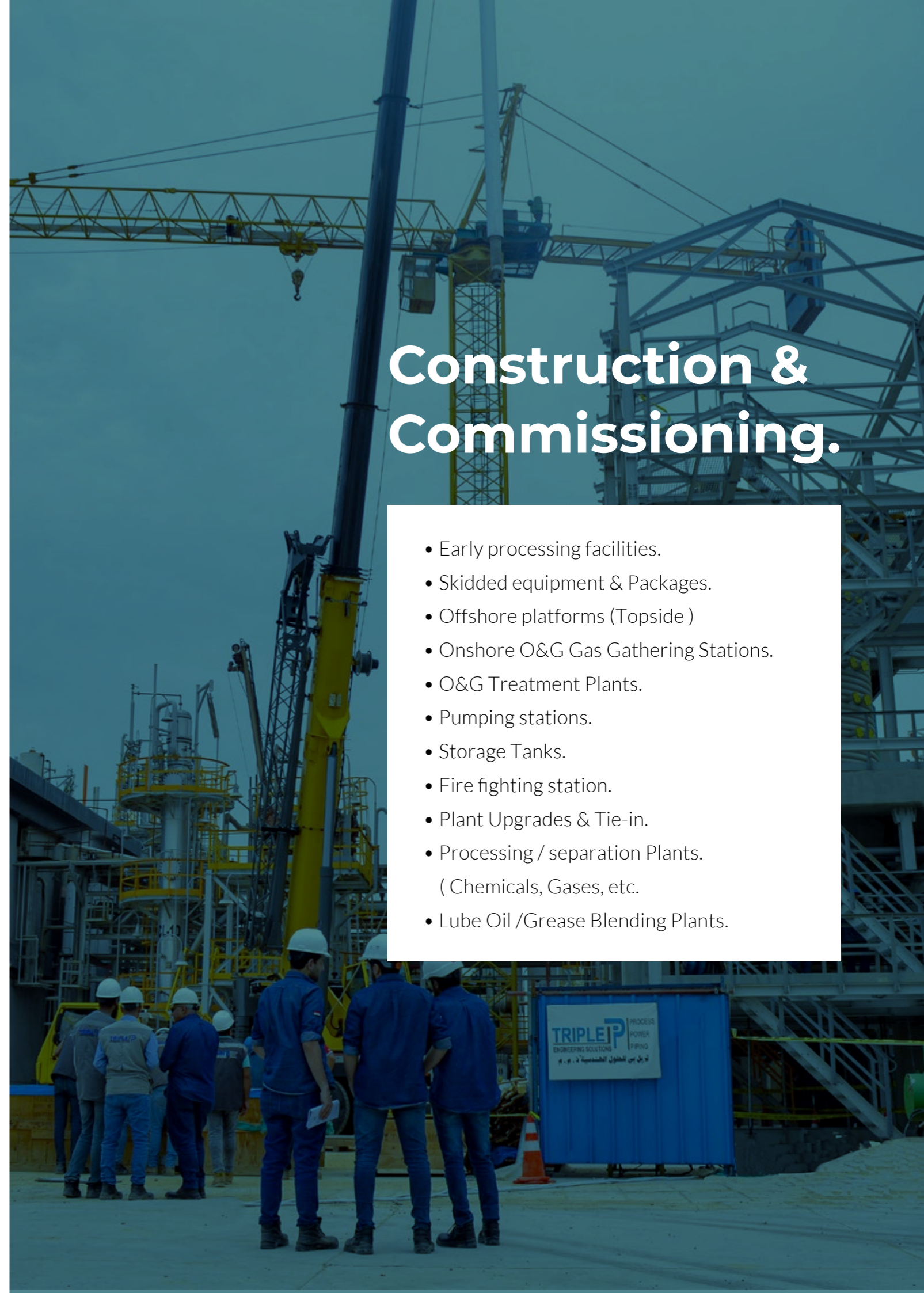
- Positive Displacement Pumps “Gear ,Vane & Piston”.
- Centrifugal Pumps.
- ANSI & API Process Pumps.
- Axial Flow Pumps.
- Screw Pumps & Chopper Pumps .
- Circulator Pumps.
- Fire Pumps “UL&FM”.
- Multistage Pumps.

### Structural Steel & Plates.

- Structural Steel . “Beams , Sections , Bars & Plates “
- Applicable Standards . “EN 10025, EN 10219, API, BS,.....”

### VALVES & FITTINGS

- Industrial Valves Gate ,Globe ,Check ,Ball & Plug
- Chock & Control Valves.
- Butterfly Valves .
- Fittings & Flanges .



# Construction & Commissioning.

- Early processing facilities.
- Skidded equipment & Packages.
- Offshore platforms (Topside )
- Onshore O&G Gas Gathering Stations.
- O&G Treatment Plants.
- Pumping stations.
- Storage Tanks.
- Fire fighting station.
- Plant Upgrades & Tie-in.
- Processing / separation Plants. ( Chemicals, Gases, etc.
- Lube Oil /Grease Blending Plants.



Thank you for being an important part of our journey. Your support and collaboration have been crucial to our success. Together, we will continue to work towards a brighter future.

CLIENTS & PARTNERS



07



PROJECTS HIGHLIGHTS

All projects references are available upon request.



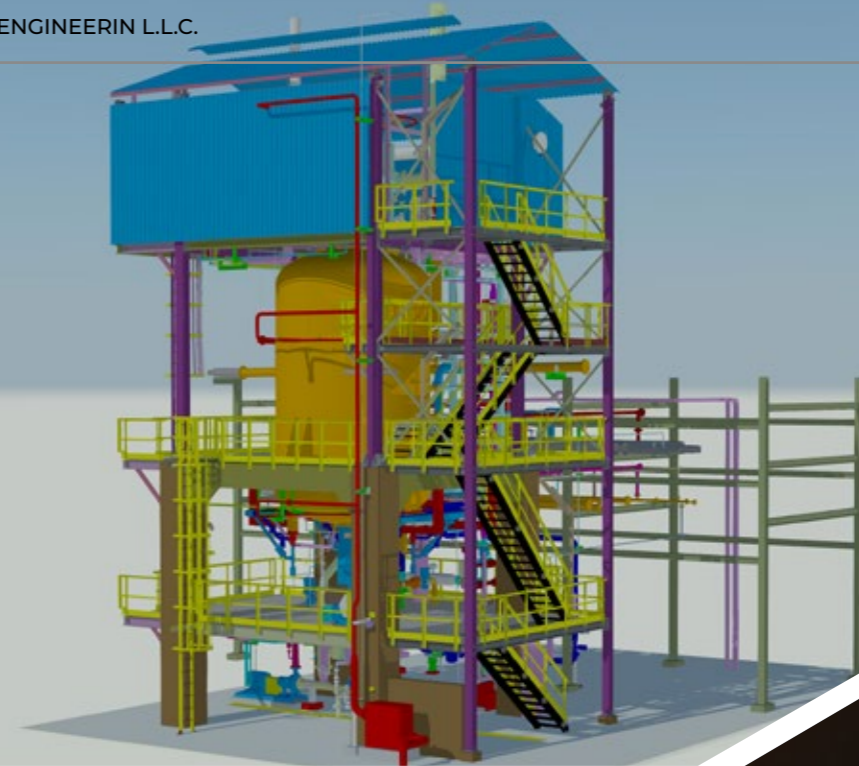
# Supply & installation of new suspension polymerization reactor (PLY-3E).

**Client:** Egyptian petrochemical company (EPC)  
**Sector:** Petrochemicals  
**Scope:** EPC project - ( Turnkey )

## Description:

The multi-disciplinary project includes detailed engineering, procurement, construction, pre-commissioning, commissioning, start up & performance test for:

- PVC suspension polymerization reactor (ASME U stamp), Cooling baffles & charging pumps.
- Agitator unit with separated lubrication system & mechanical seal system. ( Including all auxiliary systems ).
- Civil foundations, piles, steel structure & supports.
- Piping tie-in & hot tapping.
- Instruments, DCS, control valves & relief valves.
- Electrical works, Cables, cable trays & lighting fixtures.
- Fire fighting equipment, deluge valve, fire detection & alarm system.
- Utilities.



# ELAB PROJECTS

Between 2018 and 2024, Triple-P successfully executed a series of comprehensive projects at ELAB Petrochemical Plant. These initiatives were strategically designed to enhance product quality and significantly increase production capacity. By implementing advanced technologies and optimizing operational processes.

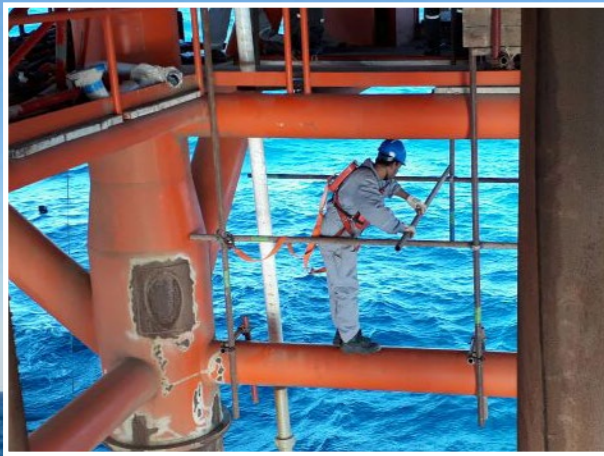
The multi-disciplinary projects includes detailed engineering, procurement, construction of ASME Vessels fabrication, Civil, structural steel, E&I, interconnecting piping, supports, tie-ins, hot taping, utilities, pre-commissioning, commissioning, start up & performance tests for:

- 2018** • Reformat chloride treater (940-V3).
  - Net gas chloride treater (400-V9).
- 2021** • Transalkylation process unit:
  - Reactor 600-R2 ASME U stamped.
  - Feed heater 600-E14 ASME U stamped.
  - Water break tank 600-V7 ASME U stamped.
- 2023** • ELAB New Area Expansion study.
  - ELAB Revamp ITB Preparation study.



# South Abu Zenima Petroleum

**Sector:** Offshore oil & gas  
**Scope:** Engineering / Construction



## MUZHIL offshore platform installations & start-up.

**Scope included the installation of:**

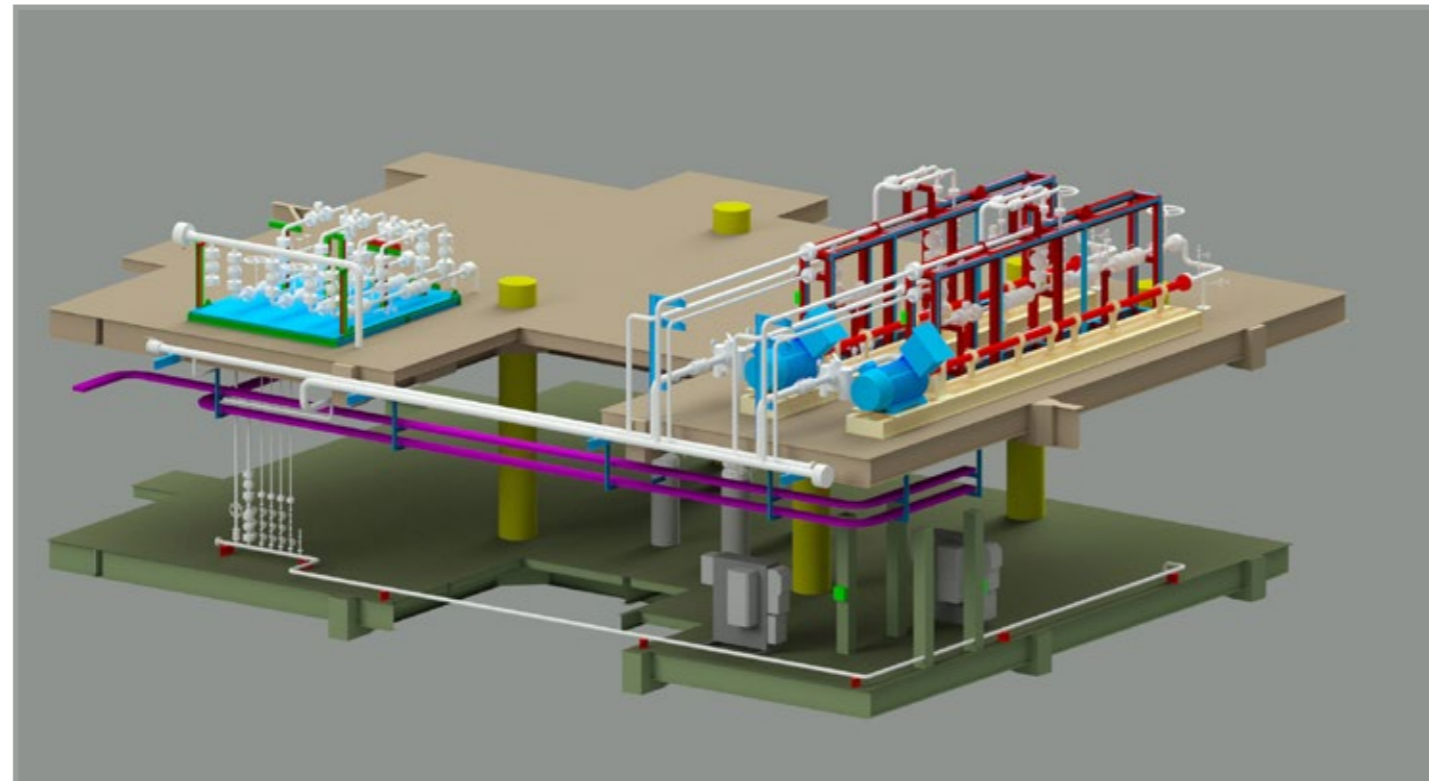
- Open drain system, closed drainsystem, flare, pumps...etc.
- Process & firefighting piping works.
- Electrical cables, panels, cable trays & lighting fixtures.
- Instruments, wellhead control panel.
- Structural steel supports.
- Fire fighting equipment, deluge valve, fire detection & alarm system.



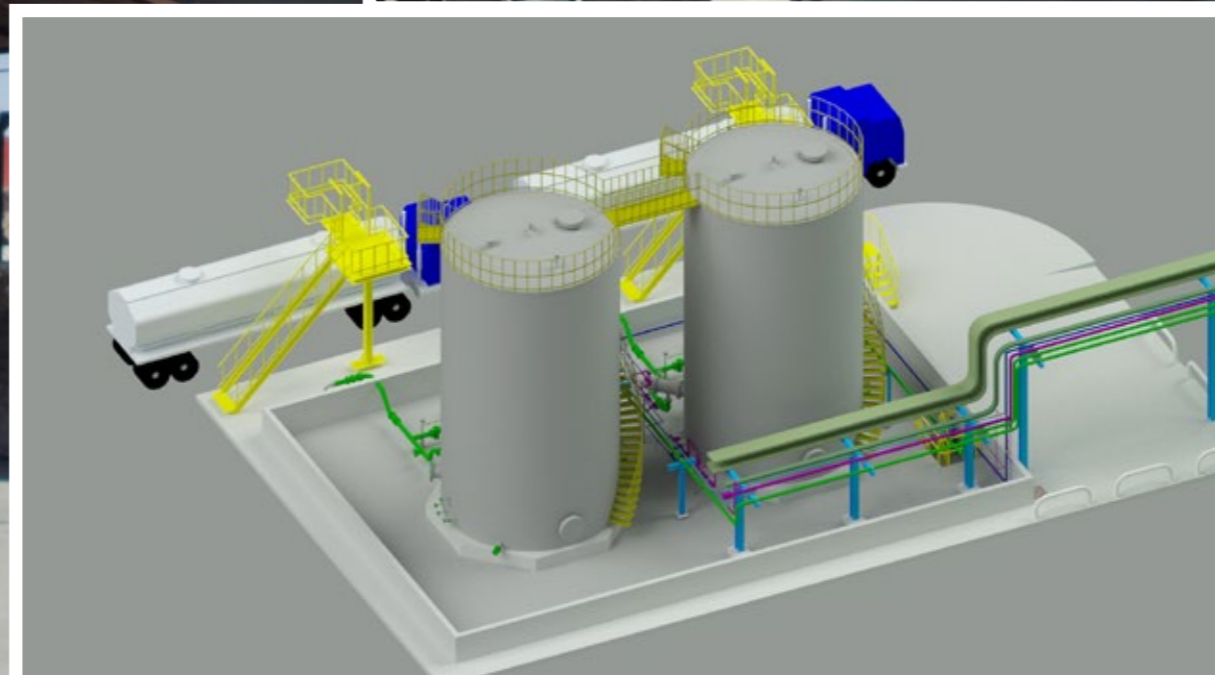
## MUZHIL offshore platform high pressure injection pumps system detailed engineering.

**Scope included:**

- Process simulation & sizing.
- Piping 3D model, isometrics, general arrangement & bill of material.
- E & I works .
- Structural steel supports.
- Equipment skids design.



# Shell Lubricants Egypt.



**Project:** Shell lubricants 6th October plant upgrade plan.

**Sector :** Industrial

**Scope :** Engineering / Construction

The 2 phase project are a major upgrade plan to shell lubricants 6th October plant.

**2014 Phase-1 included:**

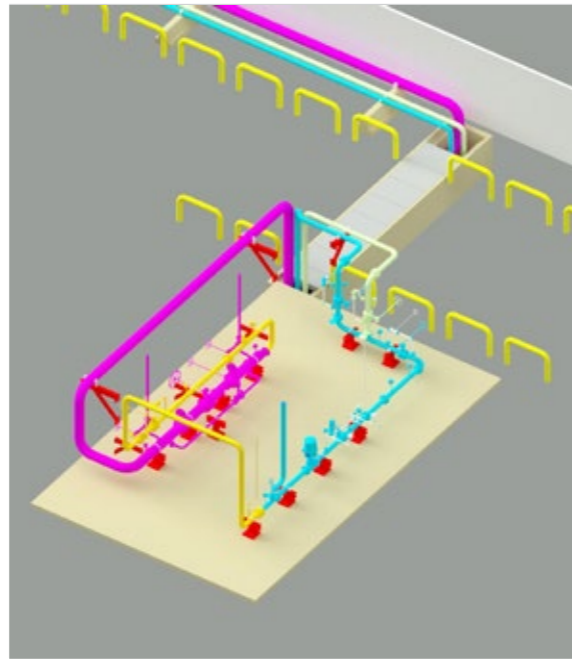
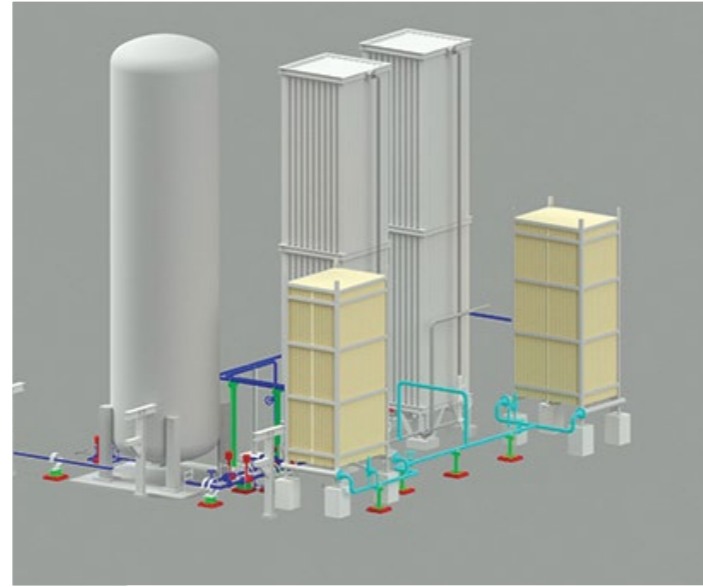
- Project visibility study.
- Detailed engineering & procurement for:
  - Installation of 2 new additives tanks (6m width x 10.5m high) & 5 tone blending unit.
  - 2 trucks unloading stations with pumps, sampling points & distribution manifold.
  - Civil foundations, admin building expansion, tanks dike walls & road crossing.
  - Interconnecting piping & supports.
  - Electrical infrastructure upgrade, Instrumentation & heat tracing.
  - HSE & EIA.
  - Fire fighting & detection upgrade.
  - All utilities upgrade plans.

**2015 Phase-2 included:**

- Fabrication / construction of:
  - 2 new additives tanks (6m width x 10.5m high)
  - 2 trucks unloading platform & distribution manifold.
  - Civil foundations, admin building expansion, tanks dike walls & road crossing.
  - Interconnecting piping & supports.
  - Electrical transformer
  - Fire fighting network.
- Supply of:
  - 5 tone blending unit.
  - Unloading stations pumps.
  - Instrumentation & heat tracing.
  - Fire detection.

# Air Liquid Egypt

The long-term partnership has fostered better resource coordination, adherence to time lines and effective communication.



**Sector:** industrial gases  
**Scope:** Engineering & Construction supervision

**2019** Triple P Engineering entered into a service agreement with Air Liquide Egypt to serve as their engineering consultant and construction supervisor. Since then, Triple P has successfully completed several projects focused on upgrading Air Liquide's facilities in Egypt. These initiatives aim to enhance production capacity, automate services, and improve operational safety.

**2019** ALX backup upgrade  
 The 3 phase project is Un upgrade to AL facility based on (EZDK) Alexandria to increase the capacity from 7600 Nm<sup>3</sup>/hr to 9100 Nm<sup>3</sup>/hr.

**2019** TCI remote operation phase 3  
 The project is preparation for AL LIN & lox backup system at TCI SanMar for petrochemical industries located in port said to be remotely operated (unmanned).

**2019** Sokhna basin pipeline  
 A detailed engineering & construction supervision for 2 underground 2.2km pipelines to connect AL existing facilities at EZZ steel plant, SG plant & Jushi plant at Elain El Sokhna industrial area.

**2020** AI EZZ / JUSHI Elain El Sokhna backup upgrade  
 A detailed engineering of two pressure reducing & shutdown stations on both facilities.

**2021** JUSHI MODIFICATIONS 2020 PROJECT  
 Adding valves & instruments on LIN Backup system, upgrading LIN truck filling system

**2021** Cables Defects Replacement  
 Inspect defected main cables due to underground water and figure solutions and methodology to replace the cables following detailed design and BOQ



**2022** Alx replacement of existing vaporizers  
 A detailed engineering for adding two vaporizers on existing foundations and modeling modifications for inlet and outlet headers and utilities relocation

**2023** Acetylene Sadat Plant Protection and Earthing  
 Inspect existing earthing / Protection system versus original design, declare if the current system is adequate and provide recommendation for safe operation.

**2023** EFS-Sokhna project jushi integration  
 Detailed engineering for the installation of a redundant standby gaseous oxygen delivery station. including tie-in points, preliminary sizes, control valves and other instruments

**2024** Alx3 power transformer  
 Replacing the starting method of the GAN compressor from DOL to Star delta through adding MV switch gear and auto transformer and all related civil works

**2024** Alx ezdk sigma new cooling tower  
 Design Farming structure to replace existing cooling towers with new cooling towers

# Almajd Warner Lewis.

**Projects:** Jet A1 storage & fuelling stations  
**Sector :** Oil& gas (aviation fuel)  
**Scope :** Engineering

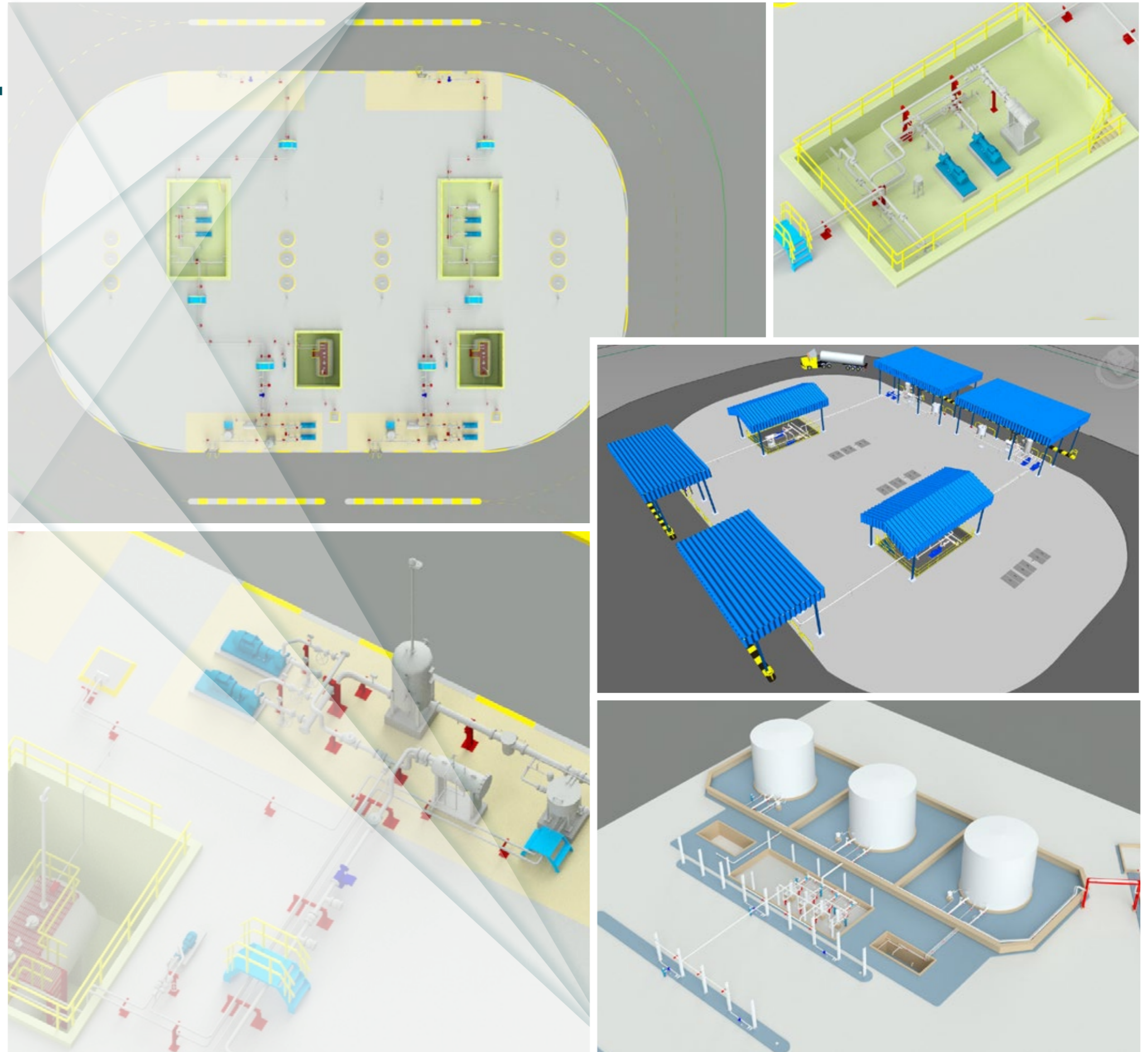
AlMajd Warner Lewis is a privately owned company specializing in aviation fuel solutions. With over 25 years of experience, they focus on designing and implementing hydrant systems for airports to ensure efficient fuel delivery.

Over the past few years, Triple P has collaborated closely with Al Majd Warner Lewis on several key projects. This partnership has focused on developing comprehensive engineering documentation for:

- 2014** Khashm al-aan camps airport jet-a1 fuel storage & Fuelling station.
- 2018** Dirab airport jet-a1 fuel storage & fuelling station.
- 2024** Al-Alamein International Airport Fuel Depot

The multi-disciplinary projects included:

- 3D modelling.
- Underground / aboveground jet fuel storage tanks.
- Interconnecting piping & supports.
- Loading & unloading stations.
- Fuel filtering & monitoring system.
- Instrument & control.
- Fire fighting equipment, fire detection & alarm system.
- Utilities.



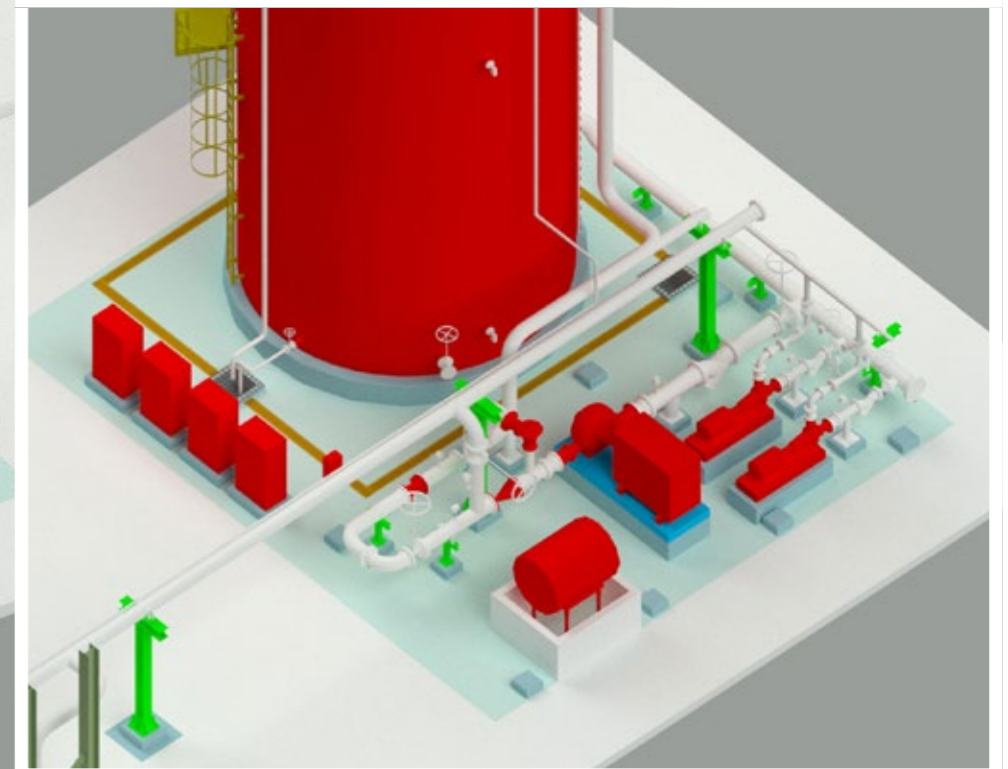
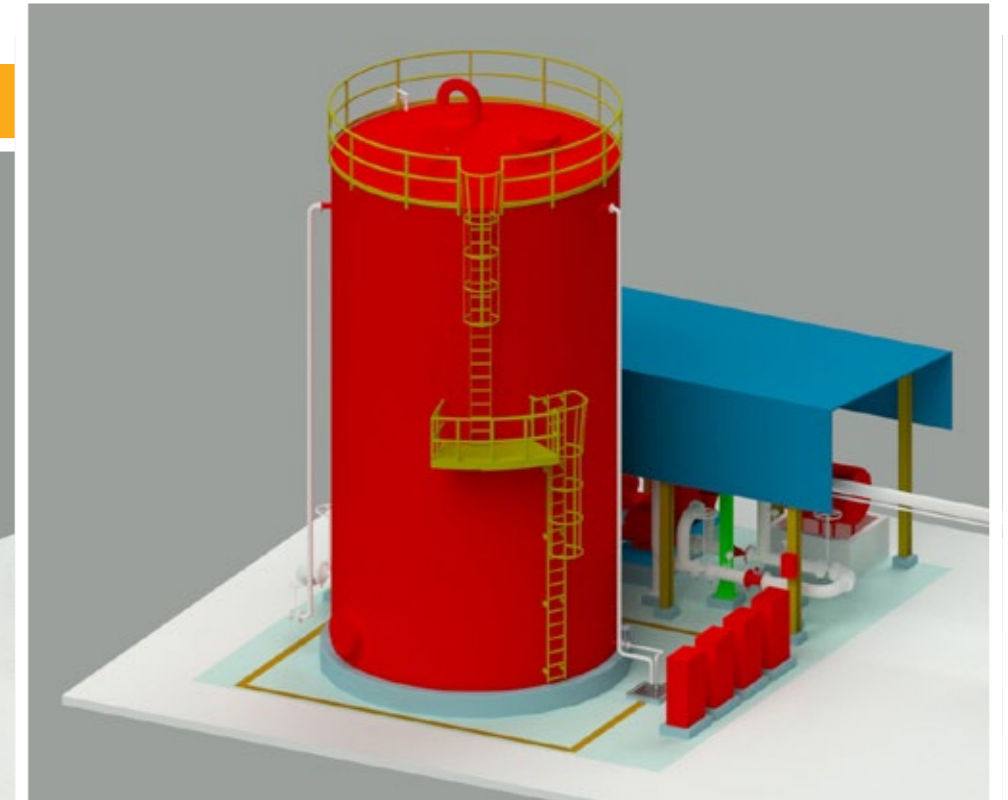
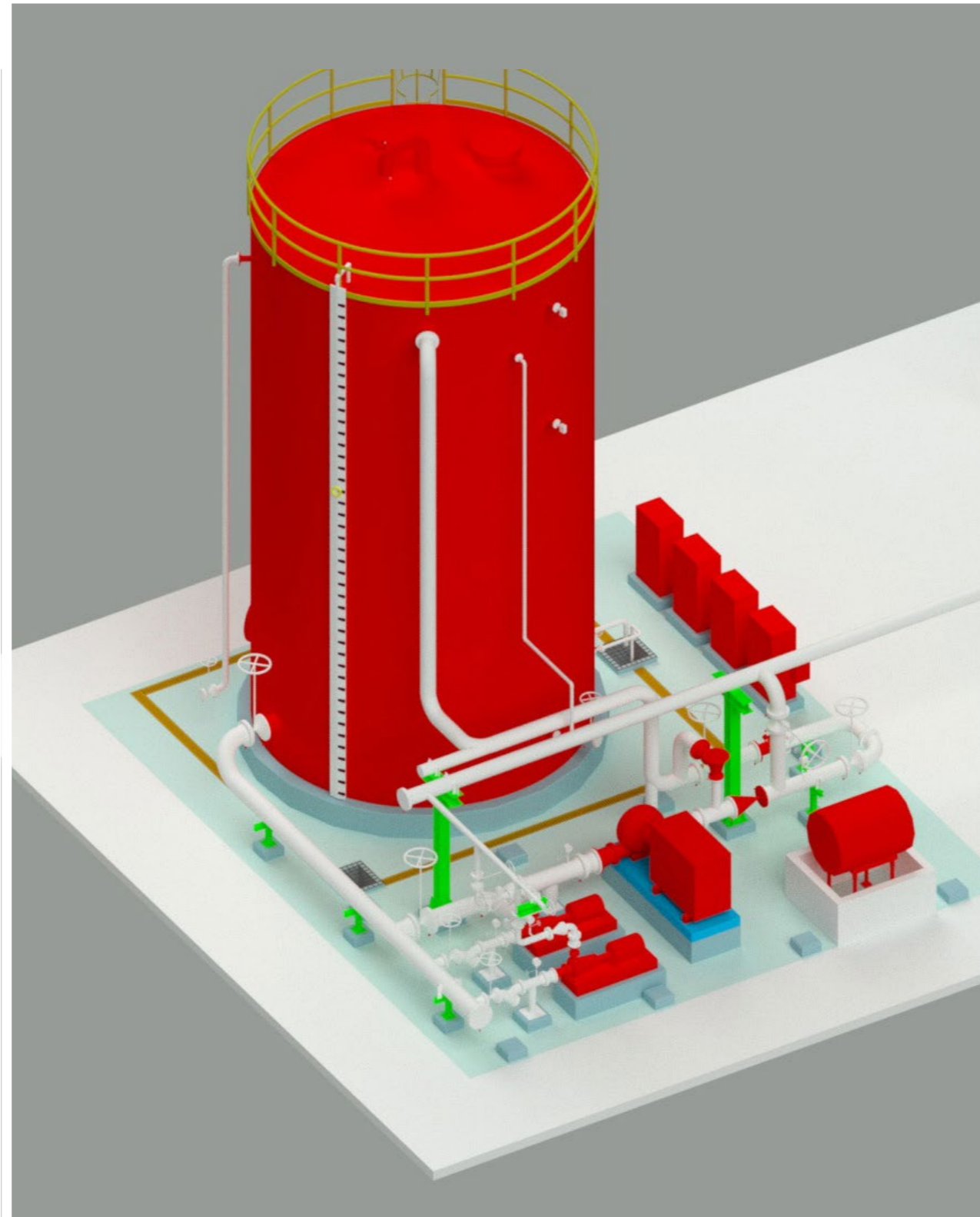
# Egyptian Natural Gas company (GASCO).

**Project:** NFBA fresh water fire water Storage tank & pumps  
**Sector :** Natural gas sector (firefighting)  
**Scope :** Engineering

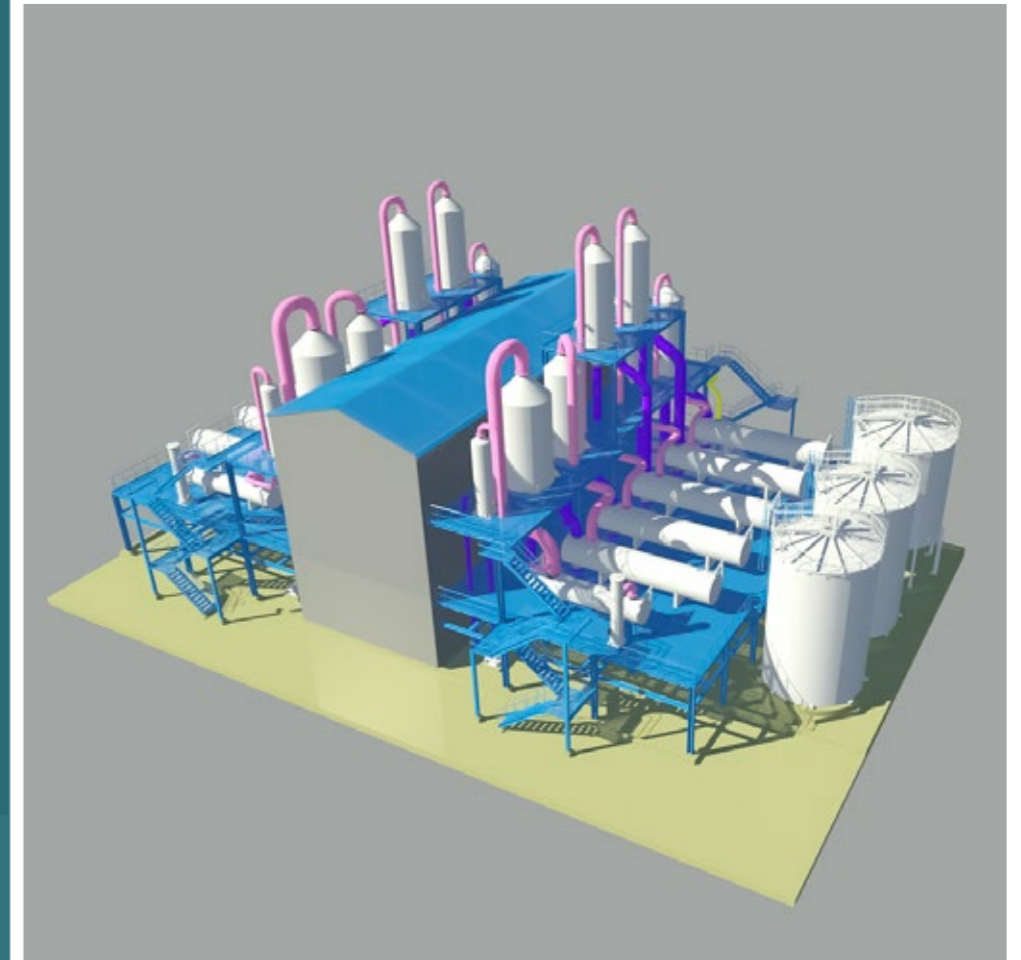
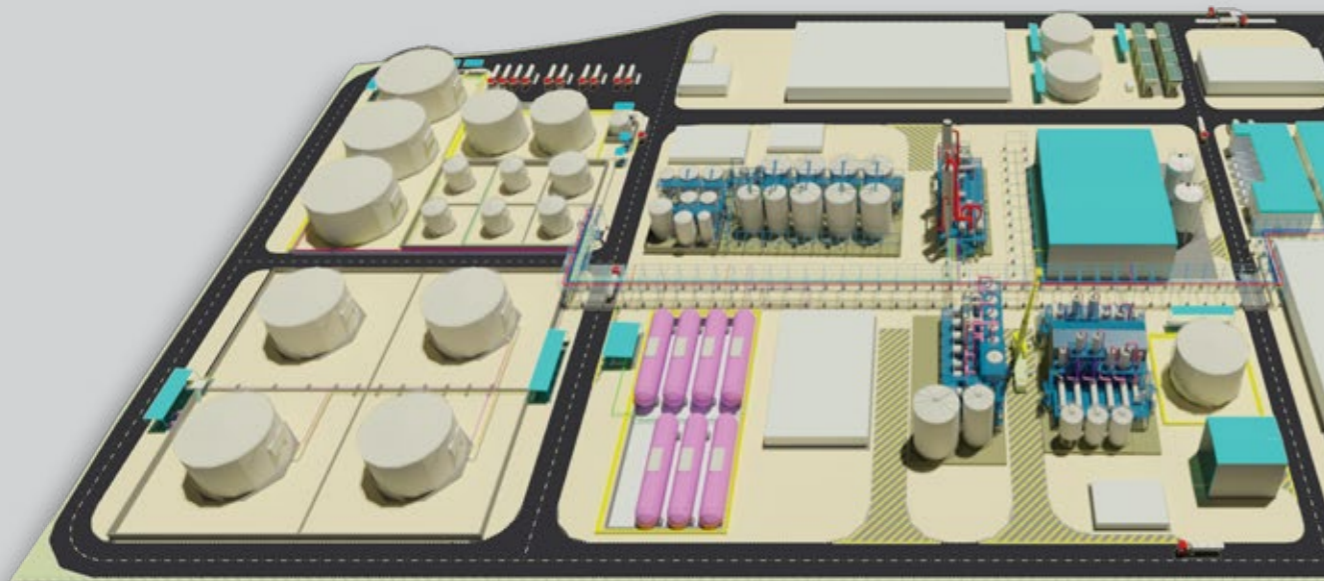
GASCO's fire fighting system initially relied on brackish water, which led to equipment malfunctions, increased maintenance costs, and rapid corrosion. To address these challenges and enhance system longevity, they have decided to switch to using freshwater instead. This change aims to improve the reliability and efficiency of their fire fighting operations while reducing the overall maintenance cost.

The multi-disciplinary project includes detailed engineering & 3D modelling of the fresh water fire water storage tank & pumps (NFBA).

- Storage tank mechanical design.
- Civil foundations for the storage tank, Diesel pump, 2 electrical pumps & juki pump.
- Electrical cables, panels, cable trays & lighting fixtures.
- Instruments & control panels.
- Enter connecting piping & Structural steel supports.
- Fire fighting equipment, deluge valve, fire detection & alarm system.





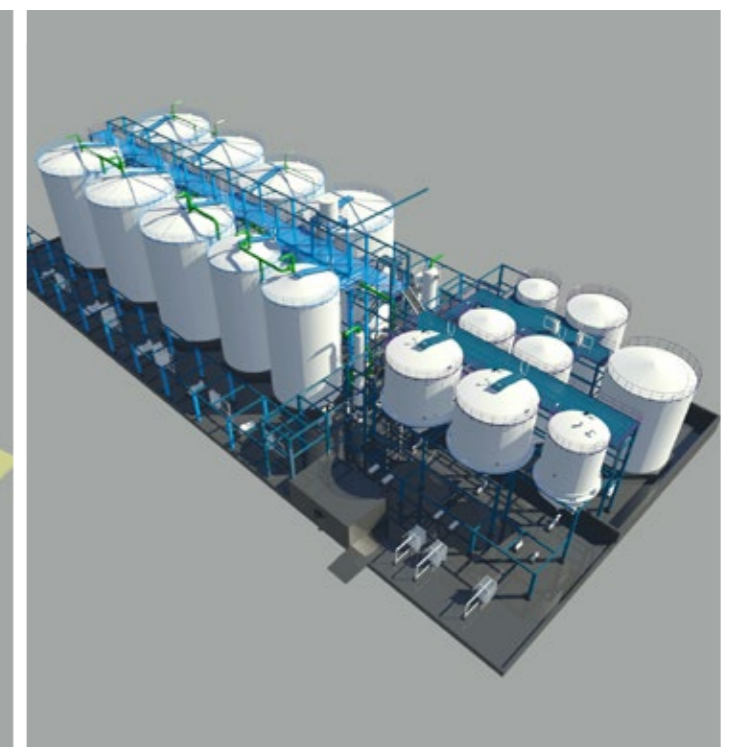
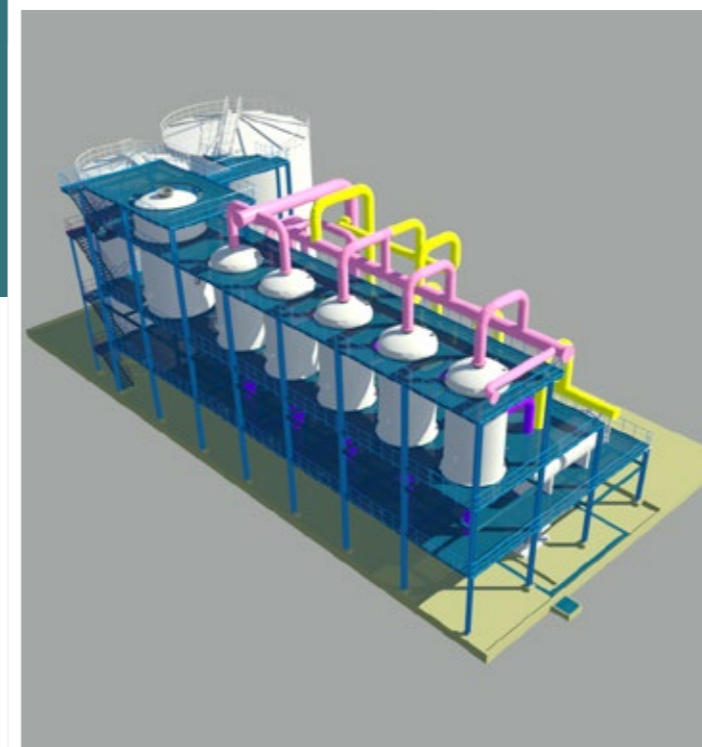


# Egyptian Bioethanol Company (EBIOL).

**Project:** FEED & ITB preparation for bio-ethanol production plant.  
**Sector :** Renewable energy.  
**Scope :** Engineering.

Triple P’s project scope includes developing the Front-End Engineering Design (FEED) and preparing the Invitation to Bid (ITB) package for constructing a greenfield facility for ethanol production at Damietta Port. This facility is designed to have a capacity of 100,000 tons per annum (TPA), utilizing beet molasses with a purity of 99.8%.

The successful completion of the ITB package is a significant step forward in advancing this important project for the Egyptian Bio Ethanol Company (EBIOL).



# North Sinai Petroleum Company (NOSPCO).

**Sector:** Oil & Gas

**Scope:** Engineering consultancy / Construction

**2015** • Kamose gas field development.

Triple P has been selected to review the detailed engineering documentation for the Kamose offshore platform & early process facility by NOSPCO.

The detailed engineering documentation included process, offshore pipeline, subsea, structural, piping, mechanical, instrumentation, electrical, loss prevention, procurement and safety deliverables necessary for construction and operation of the platform

**2019** • Kamose offshore platform topside Installations of electrical, instrument, firefighting & safety equipment, cables, cable trays & panels.

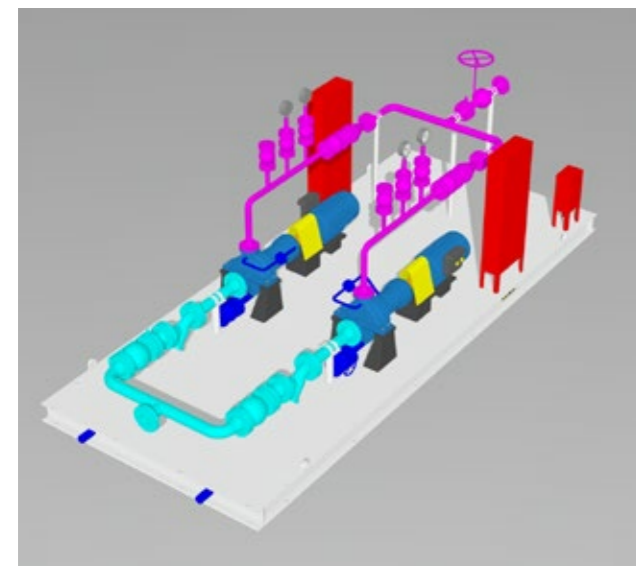


# Modular process skids.

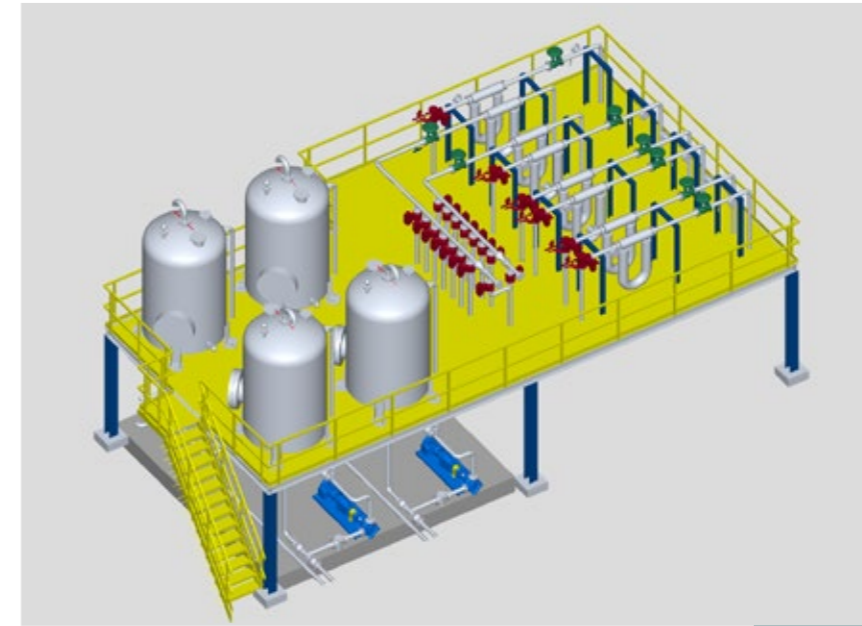
Skidded equipment, often referred to as modular process skids, is designed to include all necessary components for a specific process or system mounted on a single platform. This approach allows for easier transportation, installation, and commissioning compared to traditional methods where individual parts are assembled on-site.

Triple P's expertise in skid design/construction not only meets the functional requirements of their clients but also adheres to industry standards for safety and reliability. The designs are optimized for specific applications, ensuring that the equipment performs effectively while minimizing the risk of vibration and alignment issues during operation.

## Spirax Sarco Condensate Pumps Skid.



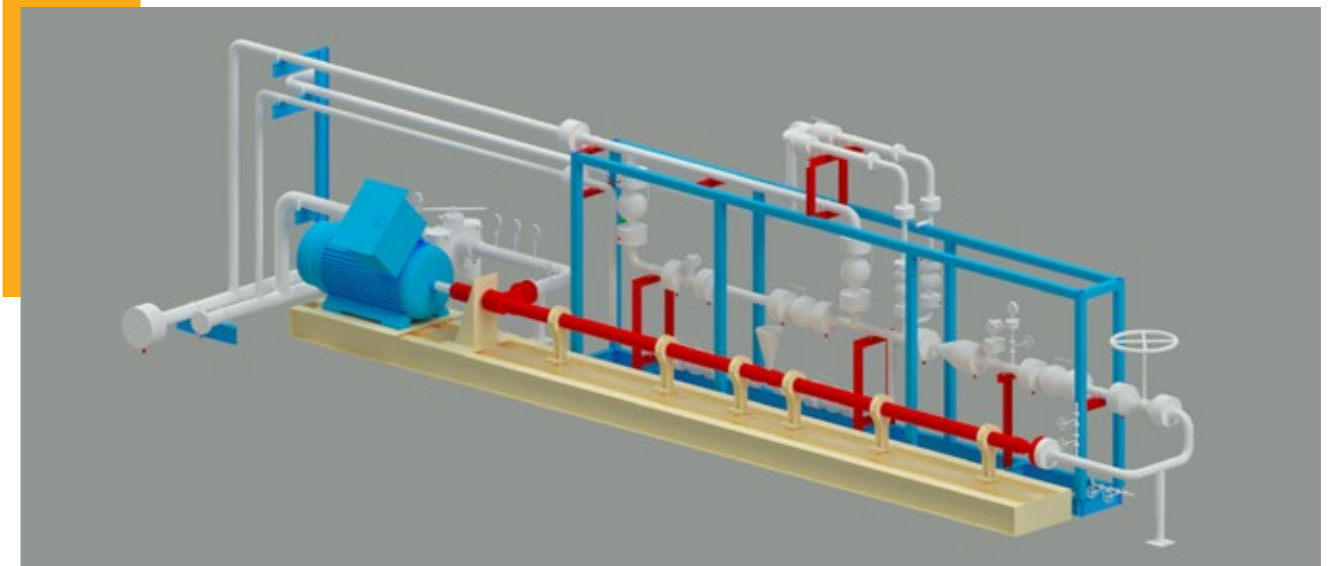
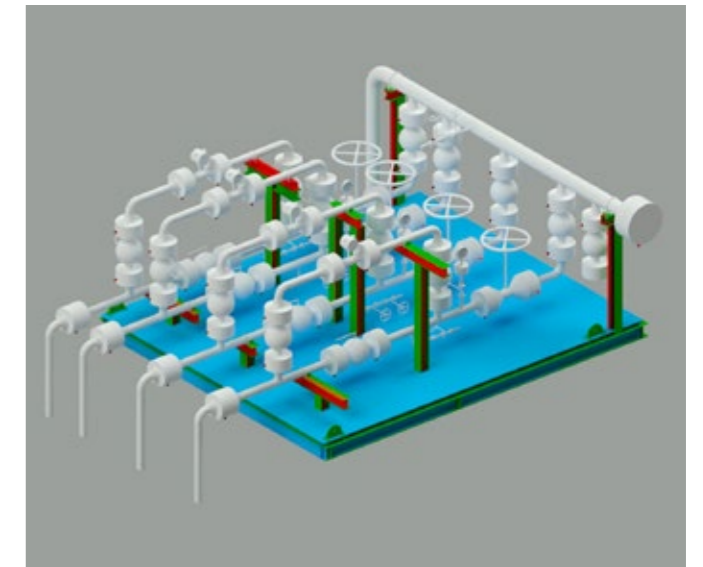
## Shotec Egypt Oily water loading pumps skid.



## COOP.

Lupe oil additives  
metering skid.

## Petrozenima High pressure water injection skids.



# 08

# Projects

# History.

All projects references are available upon request.

**Client** : Egyption ethylene & derivatives company - ETHYDCO ( 2019).  
**Sector** : Petrochemicals.  
**Scope** : Engineering.  
**Description** : Detailed engineering & 3D modeling for new haydrogen line to quench tower.

**Client** : RWE-Dea Egypt ( 2013 / 2014 ).  
**Sector** : Oil & ga.  
**Scope** : Management.  
**Description** : Disouq gas pipelines construction, HSE & welding inspection ( QC & QA ).

**Client** : NIICON Egypt ( 2013 ).  
**Sector** : Industrial.  
**Scope** : Engineering.  
**Description** : Detailed shop-drawings for jet fuel tank farm at prince Mohamed bin abdulaziz international airport. Almadina Almonwara KSA.

**Client** : Middle east oil refinery-MIDOR ( 2014 )  
**Sector** : Oil & gas  
**Scope** : Engineering  
**Description** : Stress analysis study & review for the new modifications of heat exchanger ( 01-E-09 )

**Client** : Middle east oil refinery-MIDOR ( 2016 )  
**Sector** : Oil & gas  
**Scope** : Engineering  
**Description** : FEED & HAZOP study for kerosene & jet-a1 pipielines from MIDOR to COOP king mariot loading station & COOP stratehic depot.

**Client** : Petro nefertiti Abu redis ( 2014 )  
**Sector** : Oil & ga  
**Scope** : Engineerin  
**Description** : Detailed piping engineering & 3D modeling for production area / wells area & flow lines

**Client** : Khalda petroleum company-KPC( 2012 )  
**Sector** : Oil & gas  
**Scope** : Engineering  
**Description** : Detailed engineering & 3D modeling for the upgrade of PICO Kalabsha early production facility to reach 14,000 BOPD.

**Client** : Steel wood industries-UAE ( 2013 )  
**Sector** : Industrial  
**Scope** : Engineering  
**Description** : Detailed engineering & 3D modeling for chemical storage tanks / truck offloading station / 4 pumping stations (18 pumps).

**Client** : Alexandria carbon black ( 2017 )  
**Sector** : Petrochemiacl  
**Scope** : Engineering, procurment, construction ( EPC project - turnkey project )  
**Description** : Detailed engineering, procurement, construction, pre-commissioning, commissioning & start up for plant gas network replacement during operation

**Client** : Arabian petroleum supply co. - APSCO ( 2014 )  
**Sector** : Petrochemiacl  
**Scope** : Engineering  
**Description** : Detailed engineering & 3d modeling for ABSCO new grease plant in Jeddah KSA




NOW  
Contact us

 e2 October Industrial Park, IDG admin  
Area 6 October City, Giza, Egypt.



Phone : 97 567 87 87 55  
Web : [www.ppp-eng.com](http://www.ppp-eng.com)  
E-mail : [ifo@ppp-eng.com](mailto:ifo@ppp-eng.com)

 King Fahd Bin Abdul Aziz Road,  
3603 Al Qashlah Dist, Dhahran  
,Kingdom of Saudi Arabia- KSA.

 Umm Alquien - UAE.